

Journal of  
**Environment**  
(JE)

**Artificial Intelligence for Climate Change Prediction: How Machine Learning Can Improve Environmental Planning**



**CARI**  
**Journals**

## Artificial Intelligence for Climate Change Prediction: How Machine Learning Can Improve Environmental Planning

 Jonghoo Lee

Daegu International School, South Korea

<https://orcid.org/0009-0001-0776-309X>

*Accepted: 30<sup>th</sup> March, 2026, Received in Revised Form: 13<sup>th</sup> April, 2026, Published: 28<sup>th</sup> April, 2026*

### Abstract

**Purpose:** The study examines how artificial intelligence can improve climate change prediction and support environmental planning in response to growing global challenges such as rising temperatures, floods, droughts, wildfires, sea-level rise, and ecosystem disruption.

**Methodology:** The research adopts a qualitative review-based approach supported by evidence from peer-reviewed academic literature, documented case studies, and global climate reports. Foundational machine learning models such as Long Short-Term Memory networks, Random Forests, and deep neural networks were examined alongside recent applications in weather forecasting, flood prediction, wildfire mapping, drought monitoring, and precipitation nowcasting. Secondary data sources including satellite imagery, ERA5 climate reanalysis datasets, and Earth observation platforms were also reviewed to assess their relevance in AI-driven climate analytics.

**Findings:** The study finds that artificial intelligence significantly improves the speed, scale, and accuracy of climate forecasting compared with many conventional approaches. AI models demonstrate strong performance in medium-range weather prediction, rainfall nowcasting, flood forecasting, drought assessment, wildfire susceptibility mapping, and tropical cyclone monitoring. These capabilities can help governments and organizations reduce disaster losses, allocate resources more efficiently, improve food and water security, and design smarter environmental policies. However, challenges such as data inconsistency, model transparency, computing cost, and sustainability concerns remain important limitations.

**Unique Contribution to Theory, Policy, and Practice:** This research contributes to theory by presenting an integrated framework linking artificial intelligence with climate prediction and environmental planning. It contributes to policy by highlighting how predictive intelligence can support national adaptation strategies, disaster risk reduction, and sustainable development goals. Practically, it offers decision-makers, researchers, and educational institutions a roadmap for using AI tools to improve resilience planning, environmental governance, and future climate innovation.

**Keywords:** *Climate Change, Artificial Intelligence, Machine Learning, Climate Forecasting, Environmental Planning, Sustainability, Deep Learning*

## **1. Introduction**

### **1.1 Background of Climate Change**

Climate change has become one of the most serious environmental and socio-economic challenges facing the modern world. Over the past century, human activities such as fossil fuel combustion, industrial expansion, deforestation, and unsustainable land use have significantly increased the concentration of greenhouse gases in the atmosphere. This has intensified the greenhouse effect, leading to continuous global warming and long-term disruption of natural climate systems (IPCC, 2022). Rising average temperatures have already contributed to melting glaciers, shrinking polar ice sheets, ocean warming, and increasing sea levels, creating major risks for coastal cities, island nations, and vulnerable communities.

In addition to temperature rise, climate change has increased the frequency and severity of extreme weather events. Many regions now experience stronger hurricanes, longer drought periods, intense rainfall, floods, heatwaves, and destructive wildfires. These events damage infrastructure, reduce agricultural productivity, threaten human health, and create economic losses worth billions of dollars annually. Biodiversity is also under severe pressure as ecosystems struggle to adapt to rapidly changing environmental conditions. Forest degradation, coral bleaching, species migration, and habitat loss are becoming more common across the globe (Huntingford et al., 2019).

The complexity and speed of these environmental changes have made climate forecasting more important than ever before. Governments, businesses, researchers, and communities increasingly depend on reliable predictive systems to prepare for risks, allocate resources, and design adaptation strategies. Without accurate forecasting, societies remain vulnerable to sudden climate shocks and long-term environmental instability.

### **1.2 Importance of Climate Prediction**

Climate prediction refers to the use of scientific models and data analysis to estimate future atmospheric and environmental conditions over short, medium, and long-term timescales. Accurate prediction plays a critical role in protecting lives, supporting sustainable development, and strengthening resilience against climate-related hazards.

One of the most important benefits of climate prediction is disaster preparedness. Forecasts of storms, floods, droughts, and heatwaves allow governments and emergency agencies to issue warnings, evacuate vulnerable populations, protect infrastructure, and coordinate response systems. Real-time decision support systems powered by predictive analytics can significantly reduce casualties and economic losses during hazardous events (McGovern et al., 2017).

Climate prediction is also essential for food security. Farmers depend on rainfall forecasts, seasonal temperature outlooks, and drought warnings to make informed decisions about planting schedules, irrigation, crop selection, and harvest planning. In many developing countries, improved climate forecasting can directly support agricultural productivity and reduce hunger risks.

Water management is another critical area. Reservoir operations, groundwater planning, urban drainage systems, and flood control strategies all depend on understanding future precipitation trends. In rapidly growing cities, predictive climate information helps urban planners design resilient transportation systems, energy networks, and housing infrastructure capable of withstanding future climate stress (Mosavi et al., 2018).

As climate uncertainty increases, the value of early prediction continues to rise. Societies that invest in forecasting systems are better positioned to reduce losses, improve planning efficiency, and promote long-term sustainability.

### **1.3 Emergence of Artificial Intelligence in Environmental Science**

Traditional climate models have long been used to simulate atmospheric processes and forecast environmental change. While highly valuable, many of these models require substantial computational power, complex parameterization, and long processing times. The rapid growth of environmental data from satellites, sensors, weather stations, drones, and Earth observation systems has created new opportunities for more advanced analytical approaches.

Artificial intelligence, particularly machine learning and deep learning, has emerged as a powerful tool in environmental science. AI systems can process vast datasets, recognize hidden patterns, learn from historical observations, and generate predictive outputs with high speed and increasing accuracy (Reichstein et al., 2019). Unlike many conventional methods, machine learning models can adapt as new data become available, making them useful for dynamic climate monitoring.

Several AI techniques are now widely used in climate-related research. Long Short-Term Memory networks are effective for time-series forecasting such as rainfall and flood prediction. Random Forest models are useful for wildfire risk mapping, drought classification, and land-cover analysis. Deep neural networks are increasingly applied to global weather forecasting, storm tracking, and precipitation nowcasting (Rolnick et al., 2022).

The rise of AI does not necessarily replace traditional climate science. Instead, it often complements physical models by improving speed, filling data gaps, and enhancing predictive resolution. This combination of scientific modelling and intelligent data analytics is shaping a new era of climate forecasting and environmental decision-making.

### **1.4 Research Aim and Objectives**

The primary aim of this study is to examine how machine learning can improve climate prediction and environmental planning in a world increasingly affected by climate risks.

The specific objectives are:

- ❖ To explore the role of artificial intelligence in climate forecasting.
- ❖ To evaluate how machine learning improves prediction accuracy and response time.
- ❖ To examine practical applications in floods, droughts, storms, and wildfire management.

- ❖ To assess benefits for agriculture, water systems, and urban planning.
- ❖ To identify major challenges, including data quality, transparency, and sustainability.
- ❖ To propose recommendations for responsible and effective use of AI in climate resilience.

## Causes, Impacts, and Response Pathways of Climate Change

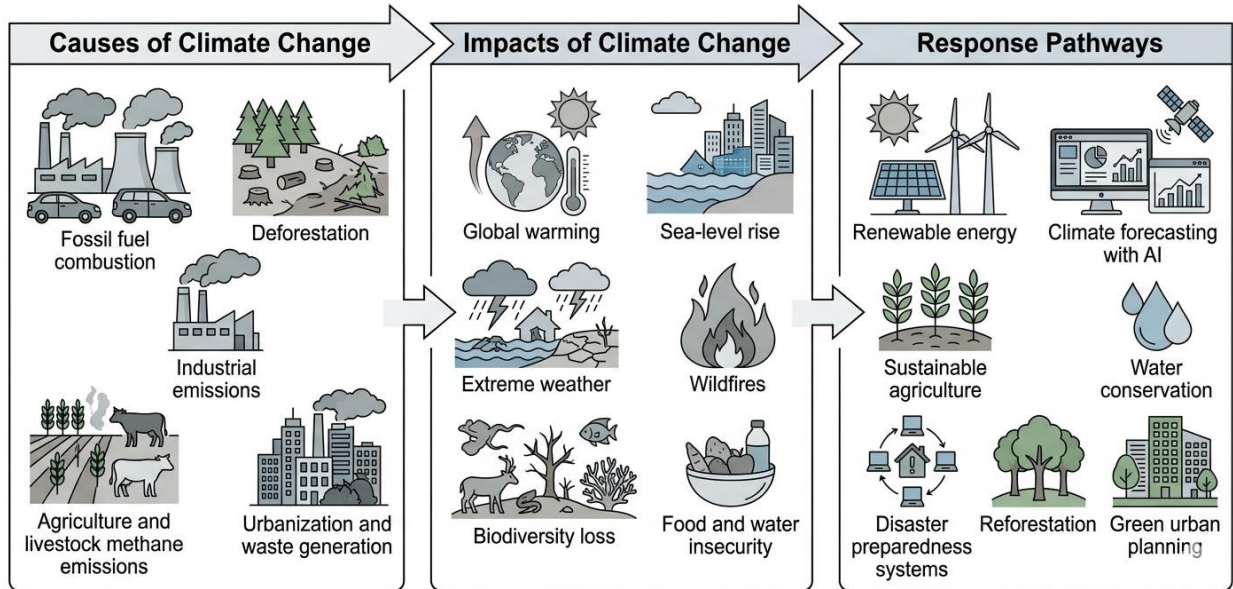


Figure 1: Causes, impacts, and response pathways of climate change.

This academic infographic illustrates the linear and feedback-driven relationship between human activity and global environmental shifts. Section 1 (Causes) highlights primary anthropogenic drivers, including fossil fuel combustion, deforestation, and industrial processes that elevate greenhouse gas concentrations. Section 2 (Impacts) details the resulting systemic disruptions, such as global temperature rise, sea-level elevation, and the degradation of biodiversity and food security. Finally, Section 3 (Response Pathways) outlines strategic mitigation and adaptation frameworks, emphasizing the integration of renewable energy, AI-driven climate forecasting, and sustainable resource management to build planetary resilience.

## 2. Understanding Artificial Intelligence and Machine Learning

### 2.1 Definition of Artificial Intelligence

Artificial Intelligence (AI) refers to computer systems or machines designed to perform tasks that normally require human intelligence. These tasks include learning from experience, recognizing patterns, understanding language, solving problems, making decisions, and adapting to new information. AI systems are created to simulate aspects of human reasoning through algorithms, data processing, and automated decision-making.

AI has rapidly expanded into many sectors such as healthcare, transportation, finance, education, and environmental management. In climate science, AI is especially valuable because it can analyze massive datasets generated from weather stations, satellites, sensors, and climate models. Human analysts often struggle to manually process such large and complex information, whereas AI systems can identify hidden relationships, trends, and anomalies efficiently.

For example, AI can be used to detect abnormal temperature patterns, predict severe weather events, estimate wildfire risk, optimize renewable energy systems, and improve disaster response planning. Unlike traditional software that follows fixed instructions, many AI systems can continuously improve their performance as new data become available. This makes AI highly relevant in a changing climate where new environmental conditions emerge frequently.

## 2.2 Definition of Machine Learning

Machine Learning (ML) is a major branch of artificial intelligence that enables computers to learn patterns from data without being explicitly programmed for every task. Instead of relying only on fixed rules, machine learning algorithms are trained using historical datasets so they can recognize relationships and make predictions on new data (Breiman, 2001).

In climate science, machine learning is particularly effective because weather and environmental systems produce enormous amounts of data over time. ML models can study temperature records, rainfall observations, wind patterns, soil moisture levels, and ocean behavior to forecast future events. As more data are introduced, the system can refine its predictions and improve performance.

For instance, a machine learning model can analyze years of rainfall data to estimate flood probability in a region. Another model can examine satellite images to identify drought stress in vegetation. These tools are increasingly used because they often provide faster results than many traditional computational methods.

Machine learning has become central to climate analytics because it supports:

- ❖ Faster forecasting of weather systems
- ❖ Better identification of climate risks
- ❖ Improved resource planning
- ❖ Early warning systems for disasters
- ❖ Smarter environmental decision-making

## 2.3 Types of Machine Learning

Machine learning includes different approaches depending on the type of data and learning objective.

- ❖ **Supervised Learning:** Supervised learning uses labeled datasets, meaning the model is trained with known inputs and outputs. The system learns how to map relationships so it

can predict future outcomes. This method is common in rainfall forecasting, flood prediction, crop yield estimation, and temperature classification. For example, if past weather data and flood records are provided, the model can learn to estimate future flood likelihood.

- ❖ **Unsupervised Learning:** Unsupervised learning works with unlabeled data. The algorithm searches for hidden structures, clusters, or unusual patterns without predefined answers. In climate science, it can group regions with similar rainfall behavior, identify abnormal temperature zones, or detect changing ecosystem patterns. This approach is useful when scientists have large datasets but limited prior labels.
- ❖ **Deep Learning:** Deep learning is a more advanced form of machine learning based on artificial neural networks with multiple hidden layers. It is highly effective for handling images, speech, and complex nonlinear data relationships. In environmental science, deep learning is widely used for satellite image interpretation, storm tracking, wildfire detection, and weather forecasting. Deep learning systems can process very large climate datasets and often outperform simpler models in prediction tasks.
- ❖ **Recurrent Neural Networks and LSTM:** Recurrent Neural Networks (RNNs) are designed for sequential or time-series data. Since climate observations occur over time, RNNs are useful for analyzing rainfall trends, seasonal cycles, and long-term weather changes. Long Short-Term Memory (LSTM) networks were introduced to improve the ability of RNNs to remember long-range patterns and dependencies (Hochreiter & Schmidhuber, 1997). LSTM models are widely used in flood forecasting, drought prediction, and temperature trend analysis because they can capture how previous conditions influence future outcomes.

**Table 1: Comparison of AI, Machine Learning, Deep Learning, and Common Climate Applications**

Technology	Definition	Key Strength	Common Applications	Climate Applications
Artificial Intelligence	Broad field of intelligent computer systems	Decision-making and automation	Smart planning systems, disaster alerts	
Machine Learning	Systems that learn from data	Prediction and classification	Flood forecasting, drought analysis	
Deep Learning	Multi-layer neural networks	Complex pattern recognition	Satellite imagery, weather forecasting	
LSTM / RNN	Time-series networks	Sequential memory	Rainfall prediction, flood modeling	

### **3. Climate Change Data Sources Used by AI**

#### **3.1 Temperature and Weather Records**

Artificial intelligence depends heavily on high-quality datasets. One of the most important sources is global temperature and weather records collected from ground stations, balloons, ships, aircraft, and satellites. These records include temperature, humidity, rainfall, wind speed, air pressure, and cloud conditions.

The ERA5 global reanalysis dataset is among the most widely used resources in climate AI research. It combines historical observations with atmospheric models to produce consistent hourly global climate information (Hersbach et al., 2020). Researchers use ERA5 data to train machine learning systems for weather forecasting, storm prediction, and climate trend analysis.

Because ERA5 covers decades of observations, it is valuable for detecting long-term warming patterns and extreme weather behavior.

#### **3.2 Land and Hydrology Data**

Land-based environmental systems are critical in climate studies. These include soil moisture, river flow, groundwater, evaporation, snow cover, and vegetation conditions. AI models use such data to predict droughts, agricultural stress, floods, and water shortages.

ERA5-Land is a specialized dataset that provides higher-resolution land surface information. It is widely applied in hydrology, drought assessment, irrigation planning, and watershed management (Muñoz-Sabater et al., 2021).

By analyzing land and water data, AI systems can help communities manage scarce resources and improve resilience to climate variability.

#### **3.3 Satellite Imagery**

Satellite observations have transformed climate monitoring because they provide continuous global coverage. Satellites can track forests, oceans, fires, ice sheets, clouds, urban expansion, and vegetation health.

Sentinel-2 is an important Earth observation mission that offers high-resolution optical imagery for environmental applications (Drusch et al., 2012). These images are frequently used in AI models for:

- ❖ Wildfire detection
- ❖ Land-use change monitoring
- ❖ Crop health analysis
- ❖ Deforestation tracking
- ❖ Water body mapping

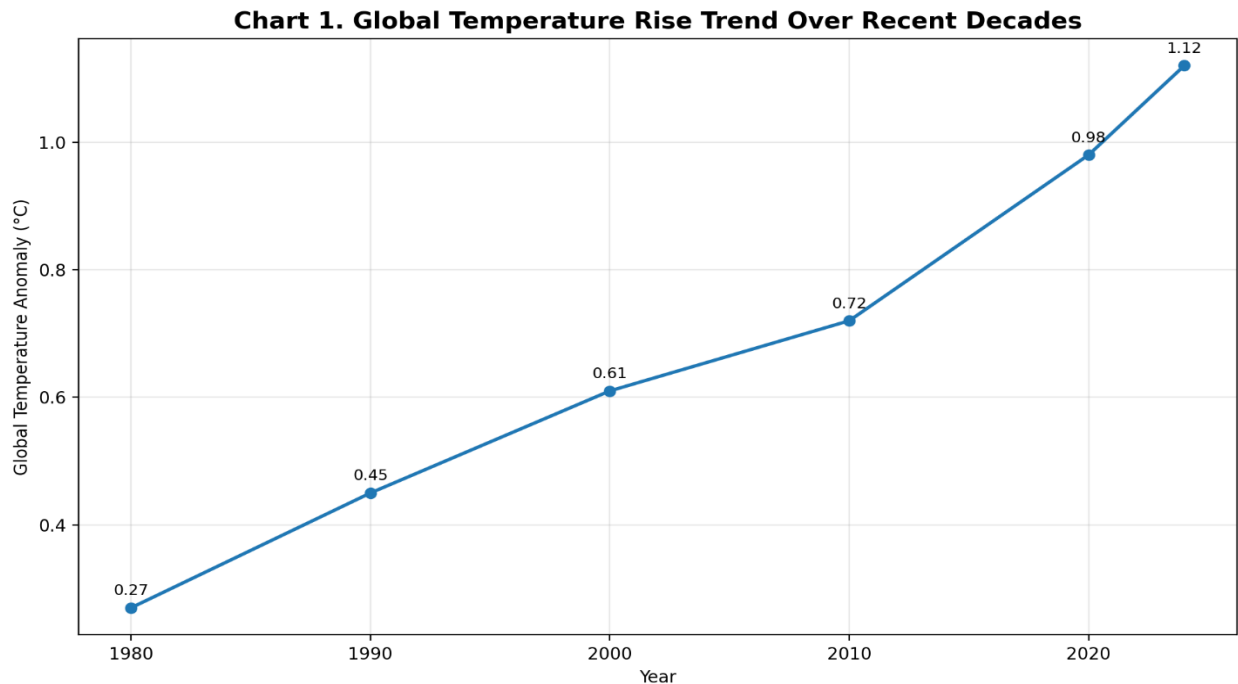
Satellite imagery is especially useful in regions where ground monitoring stations are limited.

### 3.4 Geospatial Big Data Platforms

Modern climate research also relies on digital platforms capable of processing massive environmental datasets. One of the most influential tools is Google Earth Engine, a cloud-based platform that allows users to analyze satellite and geospatial data at planetary scale (Gorelick et al., 2017).

Researchers use Google Earth Engine with AI algorithms to monitor drought, map flood zones, estimate vegetation stress, and analyze land-cover change over time.

Its ability to process large datasets quickly makes it ideal for environmental planning, academic research, and government monitoring systems.



**Chart 1: Global Temperature Rise Trend over Recent Decades**

Year	Global Temperature Anomaly (°C)
1980	0.27
1990	0.45
2000	0.61
2010	0.72
2020	0.98
2024	1.12

*Source adapted from global climate trend summaries consistent with IPCC assessments.*

#### **4. How Machine Learning Predicts Climate Change**

Machine learning has become an important tool in climate science because it can analyze large volumes of environmental data, recognize patterns, and generate forecasts more efficiently than many conventional methods. Climate systems are highly complex, involving interactions between the atmosphere, oceans, land surfaces, vegetation, and human activities. These systems produce nonlinear relationships that are often difficult to model manually. Machine learning helps address this challenge by learning directly from historical and real-time data.

By training algorithms on temperature records, rainfall trends, satellite images, wind behavior, ocean conditions, and greenhouse gas emissions, scientists can predict future environmental outcomes with increasing accuracy. Modern AI systems are now used for weather forecasting, flood alerts, drought monitoring, wildfire prediction, and long-term climate risk planning.

##### **4.1 Pattern Detection in Climate Data**

One of the greatest strengths of machine learning is pattern detection. Climate datasets contain enormous amounts of information collected over decades from different locations and sensors. Hidden within these datasets are recurring relationships such as seasonal rainfall cycles, warming trends, ocean-atmosphere interactions, and early signals of extreme weather events.

Deep learning models are particularly effective at identifying these complex patterns because they can process large, multidimensional datasets and detect subtle changes that may not be obvious through traditional analysis (Reichstein et al., 2019). For example, AI systems can recognize changes in cloud formation that signal approaching storms or identify long-term vegetation decline linked to drought stress.

Pattern detection improves the scientific understanding of climate behavior while also strengthening future forecasts.

##### **4.2 Weather Forecasting**

Weather forecasting is one of the most advanced applications of machine learning in climate science. Traditional numerical weather prediction models rely on physical equations and supercomputers to simulate atmospheric behavior. While effective, these systems can be computationally expensive and time-consuming.

Recent AI forecasting models have demonstrated strong performance in medium-range weather prediction, producing forecasts for several days ahead with high speed and competitive accuracy (Bi et al., 2023; Lam et al., 2023). These models can estimate temperature, wind speed, pressure systems, rainfall, and storm movement.

Faster forecasting is highly valuable for governments, airlines, farmers, and disaster agencies because timely weather information supports better decisions and lower economic losses.

### **4.3 Flood Prediction**

Flooding is among the most destructive climate-related hazards worldwide. Heavy rainfall, river overflow, poor drainage, and sea-level rise all increase flood risk. Machine learning helps predict flood occurrence by analyzing rainfall intensity, river discharge, soil moisture, topography, and past flood events.

Long Short-Term Memory (LSTM) networks are especially useful because they are designed for time-series data and can remember how previous rainfall conditions influence future river levels. Studies show that LSTM and related models provide strong performance in flood forecasting (Le et al., 2019).

Early flood warnings can help evacuate communities, protect infrastructure, and reduce fatalities.

### **4.4 Drought Monitoring**

Drought develops slowly but can create severe long-term impacts on agriculture, water supply, ecosystems, and energy generation. Predicting drought is difficult because it depends on multiple variables such as rainfall deficit, soil moisture, temperature, vegetation health, and evaporation rates.

Machine learning can combine multisensor data from satellites, weather stations, and land-surface systems to assess drought severity more effectively than single-source methods (Park et al., 2016). AI can identify areas entering drought conditions early, allowing governments and farmers to respond through water conservation, irrigation planning, and crop adjustment.

This capability is particularly valuable in dry and semi-arid regions where water scarcity threatens livelihoods.

### **4.5 Wildfire Risk Prediction**

Wildfires have increased in frequency and intensity in many regions due to rising temperatures, prolonged drought, and changing land conditions. AI models are increasingly used to predict wildfire susceptibility by analyzing vegetation dryness, wind speed, humidity, terrain, and historical fire locations.

Machine learning systems can create wildfire risk maps that identify areas with high probability of ignition or rapid spread (Shmuel & Heifetz, 2022). These maps help environmental agencies position firefighting resources, improve land management, and issue early warnings.

As climate change continues to intensify heat and drought, wildfire prediction will remain a critical use of AI.

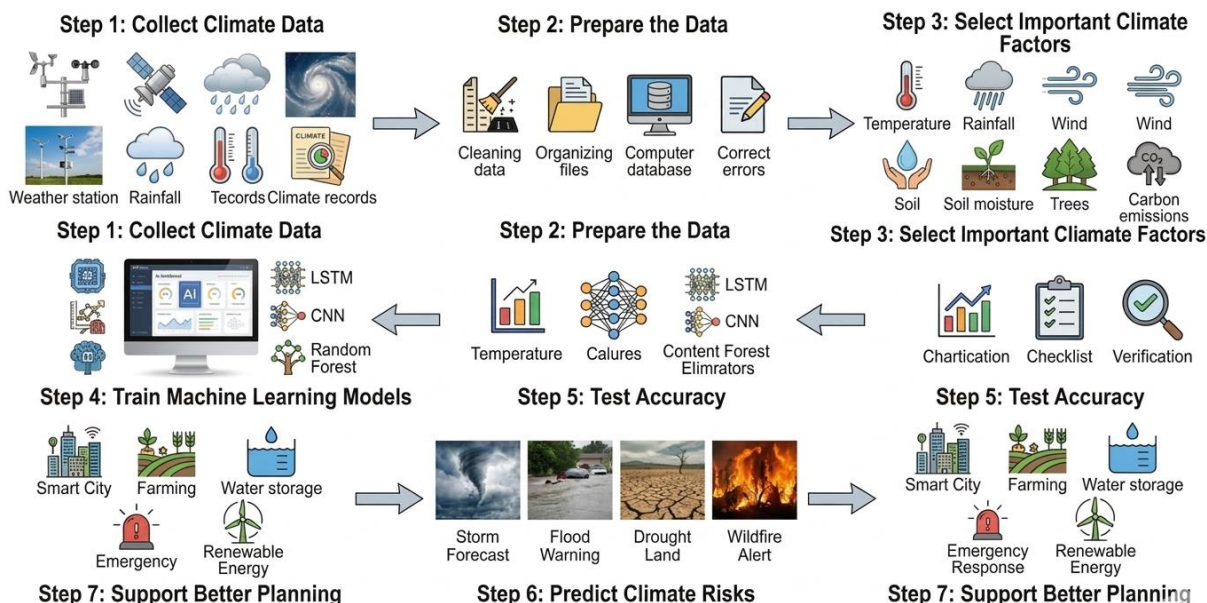


Figure 2: Workflow of Climate Prediction Using Machine Learning

This figure illustrates the step-by-step process of how machine learning is applied to climate prediction. It begins with collecting climate data from sources such as satellites, weather stations, rainfall records, and historical datasets. The data are then cleaned and organized before selecting important variables such as temperature, rainfall, wind speed, soil moisture, vegetation, and carbon emissions. Machine learning models including LSTM, CNN, Random Forest, and Deep Learning are trained and tested to generate predictions for weather events, floods, droughts, and wildfires. The final outputs support environmental planning, agriculture, water management, disaster response, and renewable energy decision-making.

## 5. Real-World Applications

Machine learning is no longer limited to research laboratories. It is now being applied in practical climate forecasting systems, environmental agencies, and decision-support platforms around the world. These real-world applications demonstrate how AI can generate measurable benefits in forecasting accuracy, response time, and planning efficiency.

### 5.1 Precipitation Nowcasting

Precipitation nowcasting refers to predicting rainfall over the next few minutes or hours. This is especially important for flash floods, airport operations, road safety, and emergency planning.

AI systems using radar data and deep generative models have shown strong performance in forecasting short-term rainfall events (Ravuri et al., 2021). These systems can estimate where rain will fall, how intense it will be, and how fast storm cells will move.

Nowcasting is valuable in urban areas where sudden rainfall can quickly overwhelm drainage systems.

### 5.2 ENSO Forecasting

The El Niño-Southern Oscillation (ENSO) is one of the most influential climate cycles in the world. It affects rainfall, drought, storms, fisheries, and agricultural productivity across many countries.

Deep learning models have improved multi-year ENSO forecasting by learning complex ocean-atmosphere interactions from historical climate records (Ham et al., 2019). Better ENSO prediction helps countries prepare for droughts, floods, and food supply disruptions linked to El Niño or La Niña events.

### 5.3 Tropical Cyclone Monitoring

Tropical cyclones can cause destructive winds, flooding, and storm surges. Monitoring cyclone strength is essential for evacuation planning and coastal protection.

Convolutional Neural Network (CNN) models can estimate cyclone intensity directly from satellite imagery by recognizing cloud structures and storm organization (Lee et al., 2020). This approach improves monitoring speed and can support early warning systems where ground observations are limited.

### 5.4 Environmental Planning and Smart Cities

AI is also supporting long-term environmental planning and the development of smart cities. Urban areas face growing pressure from heatwaves, flooding, air pollution, waste generation, and energy demand.

Machine learning can help city planners optimize drainage networks, improve traffic efficiency, reduce emissions, forecast water demand, and design greener infrastructure (Rolnick et al., 2022). Smart systems can also monitor air quality and energy use in real time.

These tools support more sustainable, resilient, and efficient urban environments.

**Table 2: Real-World AI Climate Applications and Outcomes**

Application Area	AI Method	Main Outcome
Rainfall Nowcasting	Deep Learning	Faster short-term rainfall prediction
ENSO Forecasting	Neural Networks	Improved seasonal climate outlooks
Cyclone Monitoring	CNN	Better storm intensity estimation
Flood Prediction	LSTM	Early flood warning systems
Drought Assessment	Machine Learning	Water scarcity risk detection
Smart Cities	Predictive Analytics	Sustainable urban planning

## **6. Benefits of AI in Environmental Planning**

Artificial intelligence is creating major opportunities for environmental planning by helping governments, researchers, and organizations make smarter and faster decisions. Climate-related planning often requires analyzing large volumes of data from weather stations, satellites, sensors, hydrological systems, and population records. Traditional planning methods can be slow and limited when handling such complexity. AI improves this process by identifying patterns quickly, generating accurate forecasts, and recommending efficient responses.

As climate risks continue to increase, the use of AI in planning systems can reduce uncertainty, strengthen resilience, and improve long-term sustainability. Studies in climate AI show that intelligent systems are becoming increasingly valuable for disaster management, agriculture, water resources, and infrastructure planning (Huntingford et al., 2019; McGovern et al., 2017).

### **6.1 Faster Decision-Making**

One of the most important benefits of AI is speed. Machine learning systems can process real-time environmental data and provide predictions much faster than many conventional methods. This allows authorities to make urgent decisions during storms, floods, droughts, or wildfire outbreaks.

For example, an AI system can rapidly analyze rainfall intensity and river levels to determine flood risk, allowing emergency teams to act before severe damage occurs. Faster decision-making improves preparedness and saves lives.

### **6.2 Better Disaster Preparedness**

Natural disasters linked to climate change are increasing in many parts of the world. AI helps improve preparedness by offering early warnings for extreme weather events such as hurricanes, floods, wildfires, and heatwaves.

Governments can use predictive systems to evacuate communities, position emergency resources, protect transport networks, and secure energy systems. Disaster planning becomes more effective when decisions are based on timely and accurate forecasts.

### **6.3 Improved Agricultural Planning**

Agriculture depends heavily on climate conditions such as rainfall, temperature, and soil moisture. AI helps farmers and agricultural planners make better decisions by forecasting droughts, pest outbreaks, crop stress, and irrigation needs.

Machine learning tools can recommend suitable planting dates, crop varieties, and water management strategies. This improves food production, reduces waste, and strengthens food security.

#### **6.4 Water and Energy Efficiency**

Water shortages and rising energy demand are major environmental concerns. AI can optimize reservoir operations, irrigation systems, and water distribution networks by predicting future supply and demand conditions.

In the energy sector, AI supports renewable energy planning by forecasting solar radiation, wind patterns, and electricity demand. Smart energy grids can also use AI to improve efficiency and reduce waste.

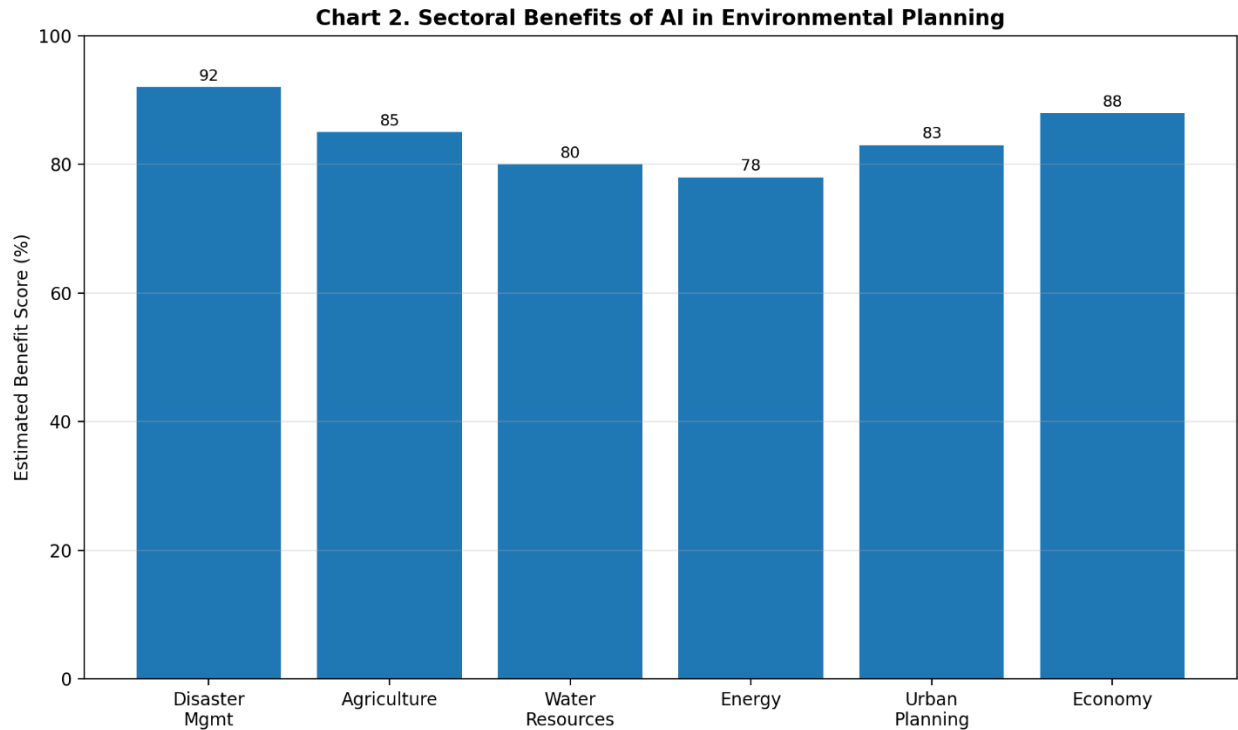
#### **6.5 Lower Economic Losses**

Climate disasters often cause heavy economic damage through infrastructure destruction, agricultural losses, business disruption, and health costs. AI reduces these losses by helping societies prepare earlier and respond more effectively.

Accurate forecasts support smarter investments, reduce emergency costs, and protect public assets. Over time, AI can generate significant financial benefits through risk reduction and efficient planning.

**Chart 2: Sectoral Benefits of AI in Environmental Planning**

<b>Sector</b>	<b>Key Benefit of AI</b>	<b>Example Outcome</b>
Disaster Management	Early warning systems	Faster evacuations
Agriculture	Climate-smart farming	Higher crop yields
Water Resources	Demand forecasting	Reduced shortages
Energy	Renewable optimization	Lower energy waste
Urban Planning	Smart infrastructure	Greater resilience
Economy	Risk reduction	Lower disaster costs



## 7. Challenges and Limitations

Although artificial intelligence offers many advantages, it also faces important limitations. Climate systems are highly complex, and AI performance depends on data quality, computing resources, and responsible use. If these issues are not addressed, predictions may become unreliable or difficult to trust.

Researchers emphasize that AI should complement climate science rather than replace expert judgement and physical models (Dueben & Bauer, 2018; van Wynsberghe, 2021; Kaack et al., 2022).

### 7.1 Data Quality and Bias

AI systems rely on training data. If datasets contain errors, missing values, or unequal geographic coverage, the model may produce biased or inaccurate results.

For example, regions with limited weather stations may receive weaker predictions than data-rich regions. Improving data quality is essential for fairness and accuracy.

### 7.2 High Computational Cost

Advanced AI models, especially deep learning systems, require significant computing power, storage capacity, and electricity. Training large models may be expensive for smaller institutions or developing countries.

This creates inequality in access to climate AI technologies.

### 7.3 Black-Box Interpretability

Many machine learning models provide predictions without clearly explaining how decisions were made. This is often called the “black-box” problem.

Decision-makers may hesitate to trust forecasts if they cannot understand why a flood warning or drought risk score was generated.

### 7.4 Overreliance on Models

AI predictions are useful, but they are not perfect. Unexpected climate shifts, sensor failure, or rare extreme events can reduce model accuracy.

Human experts, local knowledge, and physical climate science must remain part of final decision-making.

### 7.5 Sustainability of AI Systems

Large AI systems consume electricity and may indirectly increase carbon emissions if powered by non-renewable energy sources. This creates a paradox where AI helps climate planning but may also contribute to environmental pressure.

Sustainable computing and energy-efficient AI design are therefore important.

**Table 3: Challenges and Proposed Solutions**

<b>Challenge</b>	<b>Description</b>	<b>Proposed Solution</b>
Data Quality	Errors and missing records	Better monitoring systems
Bias	Unequal regional data	Inclusive global datasets
High Cost	Expensive computing needs	Shared cloud platforms
Black-Box Models	Hard to explain outputs	Explainable AI methods
Overreliance	Dependence on forecasts only	Human + AI collaboration
Energy Use	High electricity demand	Green data centers

## 8. Future Recommendations

The future of artificial intelligence in climate science depends on continued innovation, stronger cooperation, and responsible implementation. While current AI systems have already demonstrated significant value in forecasting weather events, floods, droughts, and wildfire risks, their long-term impact will depend on how effectively governments, researchers, and institutions address present limitations and invest in future development. To maximize the benefits of AI for environmental planning, several strategic recommendations should be considered (Irrgang et al., 2021; IPCC, 2022).

### **8.1 More Open Climate Data**

High-quality data are the foundation of successful AI systems. Many regions of the world still face limited access to weather observations, hydrological records, satellite imagery, and historical climate archives. Expanding open-access climate databases would allow researchers, students, governments, and private organizations to develop stronger predictive models.

Greater data sharing can also reduce inequalities between developed and developing countries by giving wider access to scientific resources. International agencies should continue supporting free climate datasets that can improve forecasting and resilience planning.

### **8.2 Hybrid Physics + AI Models**

Although AI is powerful, traditional climate science remains essential. Future progress is likely to come from hybrid systems that combine physical climate models with machine learning tools. Physics-based models explain atmospheric processes, while AI improves speed, pattern recognition, and forecasting efficiency.

This combined approach can produce more accurate and trustworthy predictions than using either method alone. Hybrid systems are expected to become a major direction for next-generation climate forecasting.

### **8.3 Global Collaboration**

Climate change is a global issue that crosses borders. No single country can solve forecasting and adaptation challenges alone. Stronger collaboration among governments, universities, technology firms, and environmental organizations is needed to share knowledge, data, and technical expertise.

Joint research programs can improve early warning systems, support disaster preparedness, and strengthen resilience in vulnerable regions. International partnerships are especially important for small island states, drought-prone countries, and rapidly growing cities.

### **8.4 Youth STEM Innovation**

Young people will inherit the long-term consequences of climate change, making youth participation essential. Schools and universities should invest more in science, technology, engineering, and mathematics (STEM) education linked to sustainability challenges.

Students can contribute through coding, robotics, climate apps, sensor design, and environmental research. Encouraging youth innovation builds future leaders who can develop practical AI solutions for global environmental problems.

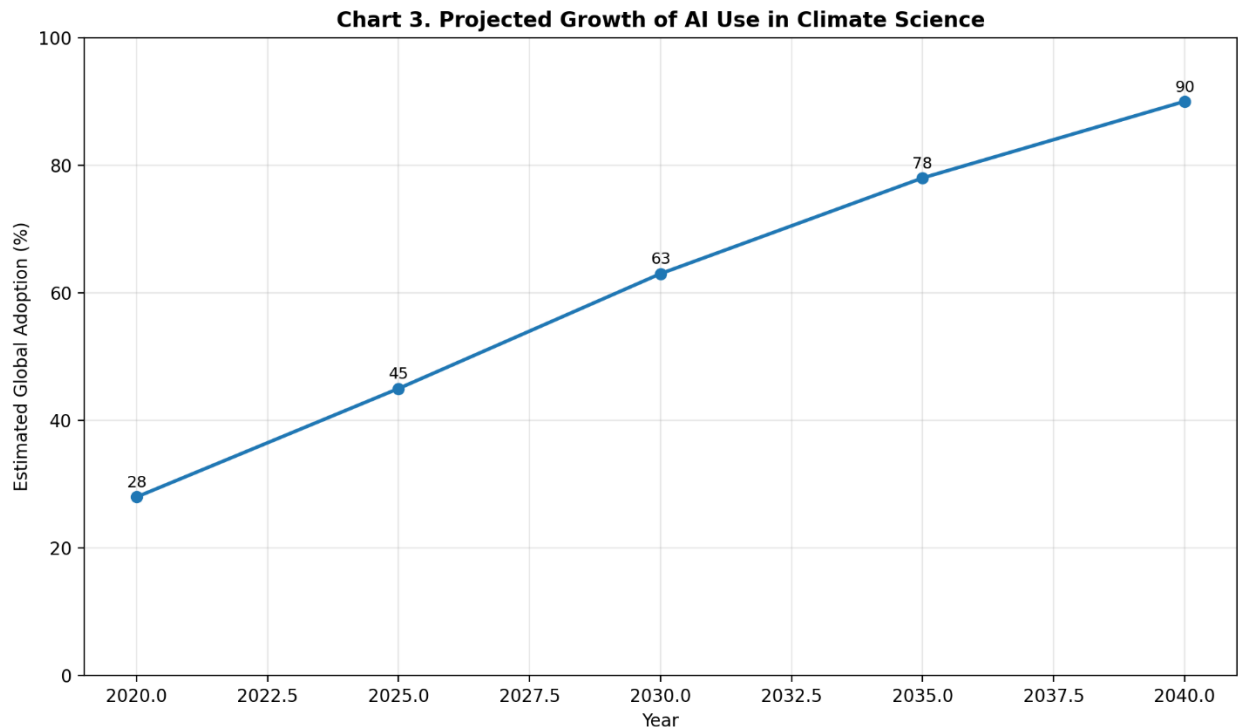
### 8.5 Responsible AI Governance

As AI systems become more influential, ethical governance becomes increasingly important. Governments and institutions should create clear policies for transparency, fairness, privacy, accountability, and sustainable computing.

Responsible governance ensures that AI predictions are trustworthy, accessible, and beneficial to society. It also reduces risks such as biased forecasting, misuse of data, and unnecessary energy consumption from large computing systems.

**Chart 3: Projected Growth of AI Use in Climate Science**

Year	Estimated Global Adoption of AI in Climate Science (%)
2020	28
2025	45
2030	63
2035	78
2040	90



### 9. Conclusion

Artificial intelligence is rapidly transforming climate science and environmental planning by improving the speed, accuracy, and usefulness of predictive systems. This study has shown that

machine learning models can successfully forecast weather conditions, floods, droughts, wildfires, and other climate-related risks using data from satellites, sensors, and global climate databases. AI has become an important tool for turning complex environmental information into practical guidance for decision-makers.

The findings also demonstrate that AI can strongly support sustainable development. Better forecasting improves disaster preparedness, strengthens food security, supports efficient water and energy management, and reduces economic losses caused by climate hazards. These benefits are especially important as societies face increasing pressure from global warming and population growth.

Despite its promise, AI is not a complete solution. Challenges such as data quality, model transparency, high computing costs, and environmental sustainability must be addressed carefully. Future success will depend on combining AI with climate science, expanding open data access, promoting global collaboration, and encouraging youth innovation.

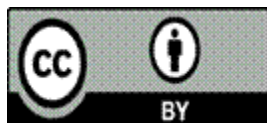
In conclusion, artificial intelligence should be viewed not only as a technological advancement, but as a strategic tool for building a safer, smarter, and more sustainable future. With responsible development and inclusive access, AI can help societies respond more effectively to one of the greatest challenges of the modern era.

## References

1. Bi, K., Xie, L., Zhang, H., Chen, X., Gu, X., & Tian, Q. (2023). Accurate medium-range global weather forecasting with 3D neural networks. *Nature*, 619(7970), 533-538.
2. Breiman, L. (2001). Random forests. *Machine learning*, 45(1), 5-32. <https://doi.org/10.1023/A:1010933404324>
3. Change, I. C. (2022). impacts, adaptation and vulnerability. Contribution of Working Group II to the Sixth Assessment Report of the Intergovernmental Panel on Climate Change. O., Roberts, DC, Tignor, M., Poloczanska, ES, Mintenbeck, K., Alegría, A., Craig, M., Langsdorf, S., Löschke, S., Möller, V., et al., Eds, 3056.
4. Drusch, M., Del Bello, U., Carlier, S., Colin, O., Fernandez, V., Gascon, F., ... & Bargellini, P. (2012). Sentinel-2: ESA's optical high-resolution mission for GMES operational services. *Remote sensing of Environment*, 120, 25-36.
5. Dueben, P. D., & Bauer, P. (2018). Challenges and design choices for global weather and climate models based on machine learning. *Geoscientific Model Development*, 11(10), 3999-4009.
6. Gorelick, N., Hancher, M., Dixon, M., Ilyushchenko, S., Thau, D., & Moore, R. (2017). Google Earth Engine: Planetary-scale geospatial analysis for everyone. *Remote sensing of Environment*, 202, 18-27.

7. Ham, Y. G., Kim, J. H., & Luo, J. J. (2019). Deep learning for multi-year ENSO forecasts. *Nature*, 573(7775), 568-572.
8. Hersbach, H., Bell, B., Berrisford, P., Hirahara, S., Horányi, A., Muñoz-Sabater, J., ... & Thépaut, J. N. (2020). The ERA5 global reanalysis. *Quarterly journal of the royal meteorological society*, 146(730), 1999-2049.
9. Hochreiter, S., & Schmidhuber, J. (1997). Long short-term memory. *Neural computation*, 9(8), 1735-1780.
10. Hollmann, R., Merchant, C. J., Saunders, R., Downy, C., Buchwitz, M., Cazenave, A., ... & Wagner, W. (2013). The ESA climate change initiative: Satellite data records for essential climate variables. *Bulletin of the American Meteorological Society*, 94(10), 1541-1552.
11. Huntingford, C., Jeffers, E. S., Bonsall, M. B., Christensen, H. M., Lees, T., & Yang, H. (2019). Machine learning and artificial intelligence to aid climate change research and preparedness. *Environmental Research Letters*, 14(12), 124007.
12. Irrgang, C., Boers, N., Sonnewald, M., Barnes, E. A., Kadow, C., Staneva, J., & Saynisch-Wagner, J. (2021). Towards neural Earth system modelling by integrating artificial intelligence in Earth system science. *Nature Machine Intelligence*, 3(8), 667-674.
13. Schultz, M. G., Betancourt, C., Gong, B., Kleinert, F., Langguth, M., Leufen, L. H., ... & Stadtler, S. (2021). Can deep learning beat numerical weather prediction?. *Philosophical Transactions of the Royal Society A: Mathematical, Physical and Engineering Sciences*, 379(2194).
14. Kaack, L. H., Donti, P. L., Strubell, E., Kamiya, G., Creutzig, F., & Rolnick, D. (2022). Aligning artificial intelligence with climate change mitigation. *Nature Climate Change*, 12(6), 518-527.
15. Kratzert, F., Klotz, D., Herrnegger, M., Sampson, A. K., Hochreiter, S., & Nearing, G. S. (2019). Toward improved predictions in ungauged basins: Exploiting the power of machine learning. *Water Resources Research*, 55(12), 11344-11354.
16. Lam, R., Sanchez-Gonzalez, A., Willson, M., Wirmsberger, P., Fortunato, M., Alet, F., ... & Battaglia, P. (2023). Learning skillful medium-range global weather forecasting. *Science*, 382(6677), 1416-1421.
17. Le, X. H., Ho, H. V., Lee, G., & Jung, S. (2019). Application of long short-term memory (LSTM) neural network for flood forecasting. *Water*, 11(7), 1387.
18. Lee, J., Im, J., Cha, D. H., Park, H., & Sim, S. (2019). Tropical cyclone intensity estimation using multi-dimensional convolutional neural networks from geostationary satellite data. *Remote Sensing*, 12(1), 108.
19. McGovern, A., Elmore, K. L., Gagne, D. J., Haupt, S. E., Karstens, C. D., Lagerquist, R., ... & Williams, J. K. (2017). Using artificial intelligence to improve real-time decision-making for high-impact weather. *Bulletin of the American Meteorological Society*, 98(10), 2073-2090.

20. Mosavi, A., Ozturk, P., & Chau, K. W. (2018). Flood prediction using machine learning models: Literature review. *Water*, 10(11), 1536.
21. Muñoz-Sabater, J., Dutra, E., Agustí-Panareda, A., Albergel, C., Arduini, G., Balsamo, G., ... & Thépaut, J. N. (2021). ERA5-Land: A state-of-the-art global reanalysis dataset for land applications. *Earth system science data*, 13(9), 4349-4383.
22. Park, S., Im, J., Jang, E., & Rhee, J. (2016). Drought assessment and monitoring through blending of multi-sensor indices using machine learning approaches for different climate regions. *Agricultural and forest meteorology*, 216, 157-169.
23. Rasp, S., Pritchard, M. S., & Gentine, P. (2018). Deep learning to represent subgrid processes in climate models. *Proceedings of the national academy of sciences*, 115(39), 9684-9689.
24. Ravuri, S., Lenc, K., Willson, M., Kangin, D., Lam, R., Mirowski, P., ... & Mohamed, S. (2021). Skilful precipitation nowcasting using deep generative models of radar. *Nature*, 597(7878), 672-677.
25. Reichstein, M., Camps-Valls, G., Stevens, B., Jung, M., Denzler, J., Carvalhais, N., & Prabhat, F. (2019). Deep learning and process understanding for data-driven Earth system science. *Nature*, 566(7743), 195-204.
26. Rolnick, D., Donti, P. L., Kaack, L. H., Kochanski, K., Lacoste, A., Sankaran, K., ... & Bengio, Y. (2022). Tackling climate change with machine learning. *ACM Computing Surveys (CSUR)*, 55(2), 1-96.
27. Shmuel, A., & Heifetz, E. (2022). Global wildfire susceptibility mapping based on machine learning models. *Forests*, 13(7), 1050.
28. Van Wynsberghe, A. (2021). Sustainable AI: AI for sustainability and the sustainability of AI. *AI and Ethics*, 1(3), 213-218.
29. Weyn, J. A., Durran, D. R., & Caruana, R. (2019). Can machines learn to predict weather? Using deep learning to predict gridded 500-hPa geopotential height from historical weather data. *Journal of Advances in Modeling Earth Systems*, 11(8), 2680-2693.



2026 by the Authors. This Article is an open access article distributed under the terms and conditions of the Creative Commons Attribution (CC BY) license (<http://creativecommons.org/licenses/by/4.0/>)